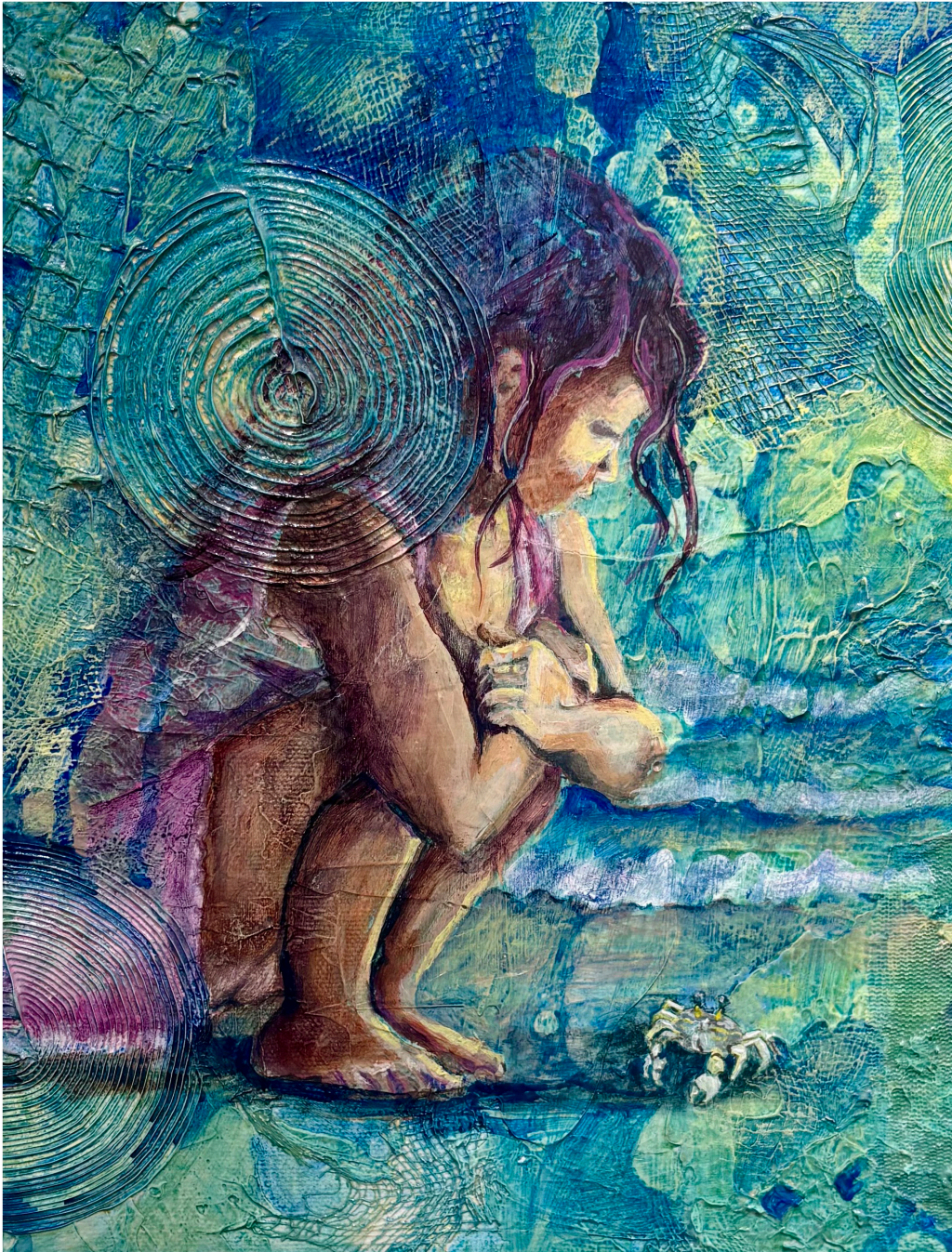




ARTS PLACE

2025 - 2026



At the Beach
by Barbara Stump

UPCOMING *events*

Dates and times are subject to change, please visit myartsplace.org to confirm.

FREE YEAR-ROUND

Weaver Community Gallery Exhibits | Hugh N. Ronald Gallery Exhibits | Blackford County Arts Center Exhibits
Open Mic & Karaoke Nights at Arts Place – 2nd Thursday, 6:30 pm

JANUARY

- Spring MusicWorks Begins[†]
- Spring ArtWorks^{*}
- Latchkey Art Club
- Arts Place Art Club^{*}

FEBRUARY

- Spring MusicWorks[†]
- Spring ArtWorks^{*}
- Eric R. Rogers Performing Arts Series
presents The McCartney Project, Sat. Feb. 14, 7 pm
- Latchkey Art Club
- Arts Place Art Club^{*}

MARCH

- Spring MusicWorks[†]
- Spring ArtWorks^{*}
- Eric R. Rogers Performing Arts Series
presents Magician Brenden Trojan, Sat. Mar. 7, 3 pm
- Latchkey Art Club
- Arts Place Art Club^{*}
- Regional Student Art Exhibits

APRIL

- MusicWorks Faculty Concert
- Spring MusicWorks[†]
- Spring ArtWorks^{*}
- Eric R. Rogers Performing Arts Series *presents*
Lee Alverson's Tribute to Elton John, Sat. Apr. 11, 7 pm &
Kaitlyn Schmit & Friends, Sat. Apr. 25, 7 PM
- Latchkey Art Club
- Arts Place Art Club[†]
- Regional Student Art Exhibits

MAY

- Spring MusicWorks Recitals
- Spring ArtWorks^{*}
- Arts in the Parks^{*}

JUNE

- Hudson Family Park Summer Concert Series
presents Dave Matthews Tribute Band, Thurs. June 4, 8 pm
- Summer MusicWorks[†]
- Arts in the Parks^{*}
250th Anniversary of the Signing of the
Declaration of Independence
- Americana Juried Art Show
- Jay County Civic Theatre *presents 1776, June 18-21*
- Summer Movie Series

JULY

- Hudson Family Park Summer Concert Series
presents The Insiders: Tom Petty Tribute Band,
Thurs. July 16, 8 pm
- Summer MusicWorks[†]
- Arts in the Parks^{*}
- Americana Juried Art Show
- Summer Movie Series

AUGUST

- Hudson Family Park Summer Concert Series
presents Thunder Struck: America's AC/DC,
Thurs. Aug. 13, 7:30 pm
- Americana Juried Art Show

SEPTEMBER

- Fall MusicWorks Begins^{*}
- Fall ArtWorks^{*}
- Latchkey Art Club
- Arts Place Art Club^{*}

OCTOBER

- Fall ArtWorks^{*}
- Latchkey Art Club
- Arts Place Art Club^{*}
- Jack Ronald Memorial Paint Out

NOVEMBER

- Fall ArtWorks^{*}
- Annual Holiday Benefit Auction *Fri. Nov. 20*
- Latchkey Art Club
- Arts Place Art Club^{*}

DECEMBER

- Jay County Civic Theatre *presents*
White Christmas, Dec. 3-5, Dec. 11-13
- MusicWorks Alumni Concert
- Christmas MusicWorks Recitals
- Fall ArtWorks^{*}
- Christmas Movie Series
- Latchkey Art Club
- Arts Place Art Club[†]

FREE Events

* Financial assistance available

† Scholarships available

LETTERS FROM OUR *leaders*

Arts Place is a shining gem, cultivating the creative spirit in our local community. With two locations, the Jay County Campus and Blackford County Arts Center, we have employed 2 full-time employees and 7 part-time employees. In 2025, Arts Place has been the benefactor to over 200 visual, teaching, and performing artists from our area and had over 20,000 patrons enter our doors at both the Portland Campus and Blackford County Centers or attend one of our outdoor concerts at the beautiful Hudson Family Park Amphitheater.

This last year, the Corporate Board of Directors, along with Executive Director Carolyn Carducci, underwent a board restructuring and valuable strategic planning, ensuring future plans and stability for the organization. Arts Place as One has been our theme this last year, with the goal to help grow and expand our programming in the underserved areas within our organizational service area. All while maintaining the traditions that Arts Place has been known for. Thanks to your continued support, programming such as Arts in the Parks, MusicWorks, ArtWorks, the Eric R. Rogers Performing Arts



Series, Hudson Family Park Summer Concert Series, Gallery Showings, Regional Student Art Exhibits, and Juried Art Shows have thrived and grown in numbers while adding new programming including Afterschool Art Club, Open Mic Nights, Jack Ronald Spring Paint Out, and Free Summer and Christmas Break Movies in the theater.

All of this has been made possible due to the generosity of people like you who have cared enough to donate to help make the programming free or affordable to the members of the community we serve. The arts help to shape and mold a community, and by having facilities such as Arts Place, that encourage, engage, and teach the arts, we are working to make our community a better place. With your continued support, we are working to create a community and culture that is beautiful, cultured, and unique to our area. Thank you for your continued support in this venture.

Dr. Sarah Lingo

President, Arts Place Board of Directors

As we close the chapter on Fiscal Year 2025, I am filled with immense gratitude to our supporters. It is rare that rural communities have longstanding, multidisciplinary arts centers; your generosity makes Arts Place possible.

I also want to extend my sincere appreciation to the Board and staff for their hard work, dedication, and resilience throughout this remarkable year. A special thanks to more than 180 artists who collectively provided hundreds of arts activities; you put the "art" in Arts Place. And finally, thank you to all our students, patrons, and attendees. Your participation at Arts Place makes all our hard work worthwhile.

This year, we saw our collective efforts come to fruition in significant ways. Among our key achievements, we are particularly proud of: our board restructuring effort to assure that our service area is well represented, a new strategic plan guiding our organization, new and improved programming, and the completion of three regional arts master plans funded by the National Endowment for the Arts "Our Town" grant award.

Arts Place remains committed to responsible stewardship of the funds we receive. To that end, we paid off our line of credit, streamlined our budget and reduced expenses, initiated an effort to pay off our mortgage from the 2000 building expansion, and worked tirelessly to fundraise

\$460,000 for our annual campaign. Our fiscal plan assures that we can provide affordable, and whenever possible, free arts experiences in our region. We successfully set these goals, and in doing so, Arts Place emerged stronger, more agile, and more determined than ever. At Arts Place, we are committed to ensuring that Arts Place remains sustainable for the foreseeable future.

As we turn our attention to the year ahead, we are focused on building on the momentum we have created. Our mission remains steadfast: nurturing the creative spirit in the communities we serve. We are confident that by focusing on sustainable, quality arts programming, we will achieve even greater success.

Our achievements this year would not have been possible without the commitment of our board, staff, artists, and participants. Thank you for being a vital part of our journey. Your passion drives us forward, and we are excited about the opportunities that lie ahead.

Thank you for another outstanding year.

Carolyn Carducci

Executive Director



BLACKFORD COUNTY

As Tchaikovsky once put it, "Where words leave off, music begins." During my time at Arts Place, I have learned just how true this phrase is. Utilizing scholarships, I have spent four years taking piano with Ann Clamme Monroe and a year and a half of bassoon lessons with Danielle Lilly. During my time with these teachers at Arts Place, I have learned a multitude of things about music and built strong community relationships. Although I dread the bi-yearly recitals, my teachers have led me through those trying times so I could perform my best. The way they have taught me has boosted my confidence, aiding me to become the performer I aspire to be. My teachers pour into their students, equipping them with musical knowledge and skills to do whatever they want to with music. For me, this has given me the confidence to compose a piece of music myself and dream about a variety of music-based careers that I can aspire to attain, such as playing in a professional orchestra.

After all these years of lessons, I still get excited every time I see Arts Place on our calendar at home. From chatting with the witty check-in ladies, to practicing difficult bassoon sonatas, to being challenged to count time consistently, I always enjoy my time at Arts Place. If I were not sponsored by generous benefactors, however, it would be a totally different story. Without this monetary assistance, my family would not be able to afford my bassoon rental along with two private lessons a week (piano and bassoon). This has changed my life: I would not have been equipped to be able to play in a fun and exciting youth orchestra, I would not be able to play hymns throughout the day to relax, or be a part of our worship team at church. Indeed, Arts Place has irrevocably changed my life for the better.

Michael Spitler

Blackford County, Student



*check
this out*

“ THE WAY THEY HAVE TAUGHT ME
HAS BOOSTED MY CONFIDENCE,
AIDING ME TO BECOME THE
PERFORMER I ASPIRE TO BE. ”



JAY COUNTY CAMPUS

131 East Walnut Street
Portland, IN 47371

260-726-4809 • jcc@myartsplace.org

Performing Arts Center

*Hall-Moser Theatre, the Hugh N. Ronald Gallery and the Weaver Community Gallery,
Goodrich Hall, MusicWorks in the Young Music Education Wing, and meeting rooms*

Hudson Center for the Visual Arts

Arts in the Parks, ArtWorks, and the industrial gas kiln

BLACKFORD COUNTY ARTS CENTER

107 West Washington Street
Hartford City, IN 47348

765-348-4154 • bcac@myartsplace.org

Arts in the Parks classes, ArtWorks, and MusicWorks



ARTS IN THE PARKS

*Classes are offered in 12 communities, including
(Ohio) Coldwater, Fort Recovery, Minster, New Bremen, and St. Henry,
as well as (Indiana) Berne, Dunkirk, Hartford City, Montpelier,
Pennville, Redkey, and Portland.*



OUR *directors & staff*



ARTS PLACE

2025 CORPORATE BOARD OF DIRECTORS

Dr. Sarah Lingo
President

Mike Medler
Vice President

Kristen Gibson
Secretary

Dr. Daniel Hammond
Treasurer

Dr. Bonnie Maitlen

Mary C. McCord

Myra Smith

Laura Pieper

LeeAnn Miller

Kathy Ayers

Atty. Jim Forcum

Jon Creek

Isaac Gorrell

Carolyn Carducci
Executive Director & CEO

CORPORATE STAFF

Amanda Chaffins
Controller

Allison Smiley
Visual Arts Director

Shawnda Roussey
Center Director,
Jay County Campus

Lydia Rowles
Center Director,
Blackford County Arts Center

Teresa Penrod
Head Receptionist

Greg Ashley
Development Clerk

Emma LeMaster
Front Desk Assistant

Troy Lee
Front Desk Assistant

Katie Cale
Ceramics Specialist



JAY COUNTY

I have always loved art and music, but growing up in a rural area made it difficult to find opportunities to explore those passions. Arts Place changed that for me. I first discovered it as a student when I brought home a flyer from school. I was amazed at the variety of classes being offered and excited that they were both affordable and close to home. I was able to join the new choir program, Stateline Singers.

Opportunities like this for me were possible through scholarships and the generosity of community supporters, and I will always be grateful.

In 2012, while teaching, I brought home another flyer, this time for First Steps in Music, a class for babies and toddlers. I enrolled my daughter, and three years later, my son as well. History repeated itself as they became involved in MusicWorks and Arts in the Parks.

While picking up my daughter from a lesson, I noticed a painting class and enrolled,

becoming an Arts Works student again. Later, I took private piano lessons, and through

MusicWorks and Art Works, we discovered auditions for The Little Mermaid (my favorite Disney movie). My daughter earned a small role, which led to parts in Miracle on 34th Street, and eventually to my own

role as Fiona in Shrek the Musical.

Arts Place has been a part of my life for over 30 years. It has shaped me as a child, parent, teacher, and now as a community member.

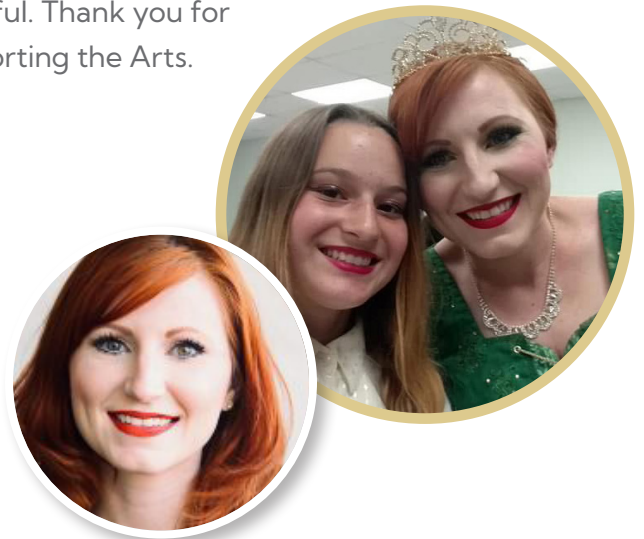
That's why I wanted to give back to Arts Place what it had given to me, and I joined the Corporate Board, where I serve as secretary. To me, this is the full circle of what Arts Place represents: creating opportunities, inspiring creativity, and bringing people together. I am grateful. Thank you for supporting the Arts.

“**ARTS PLACE HAS BEEN A PART OF MY LIFE FOR OVER 30 YEARS. IT HAS SHAPED ME AS A CHILD, PARENT, TEACHER, AND NOW AS A COMMUNITY MEMBER.**”

Kristen Gibson

Jay Schools Educator

Secretary, Arts Place Corporate Board



REGIONAL *events & activities*

These regional arts master plans for Blackford and Jay Counties (Indiana) and Auglaize County (Ohio) were funded by the National Endowment for the Arts through their “Our Town” grant and fiscally managed by Arts Place, Inc.

Our Town projects seek to “provide opportunities for the arts to be integrated into the fabric of community life — Strengthening Communities.” A consultant team facilitated a community-driven planning process for each county providing opportunity to coordinate strategic efforts beyond individual boundaries.



AFFORDABLE ACTIVITIES

Financial assistance and scholarships are available for those who qualify.

MUSICWORKS

Lessons, ensembles, and recitals

ARTWORKS

Clubs, classes, workshops, and camps

AFTERSCHOOL ART CLUBS

ARTS IN THE PARKS

12 communities to choose from



REGIONAL *events & activities*

FREE EXHIBITS

WEAVER COMMUNITY
GALLERY

HUGH N. RONALD GALLERY

GALLERY AT THE
BLACKFORD COUNTY
ARTS CENTER

SPRING REGIONAL
STUDENT ART EXHIBITS

FREE ACTIVITIES @ JAY COUNTY CAMPUS

OPEN MIC NIGHTS

SUMMER MOVIE SERIES

CHRISTMAS MOVIE SERIES



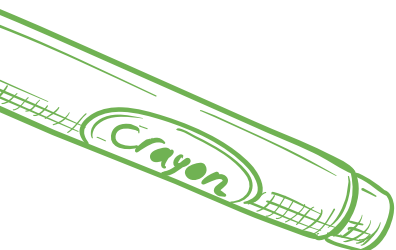
ARTS PLACE EVENTS

FREE SUMMER CONCERT SERIES
at Hudson Family Park
Amphitheatre

ARTS PLACE ANNUAL
HOLIDAY BENEFIT AUCTION

ERIC R. ROGERS
PERFORMING ARTS SERIES

JACK RONALD PAINT OUT



SUPPORT OUR COMMUNITY AND OFFERINGS

Arts Place is a regional provider of arts experiences to East Central Indiana and West Central Ohio through our two centers: Arts Place Blackford County Arts Center in Hartford City and Arts Place Jay County Campus in Portland, Indiana.

We rely on the support of individuals and businesses like YOU – passionate people who share our belief in the importance and value of the arts. Your support means the world to us and helps energize our mission-driven work to develop vibrant and valuable visitor experiences that engage individuals of all ages and interests in the arts community.



FOUR WAYS TO GIVE



PLANNED GIVING

If you would like to make a memorial or restricted gift, a gift of stock, or to learn more about planned giving, please contact Carolyn Carducci at (260) 726-4809 or at executivedirector@myartsplace.org.

Arts Place is recognized as a 501(c)(3) organization by the Internal Revenue Service. Your contribution is tax deductible to the full extent of federal law.

Annual Fundraising, Endowments & Investments



\$528,372.85

Annual Earned Income (Registration fees, tuition, ticket sales, etc.)



\$88,978.91

**Your Support Allows
Arts Place to Charge
6 Times Less
for Events & Activities**



THANK YOU!

HELPFUL *donations*

Arts Place is constantly tasked with creating a balance between what our community can afford to pay for arts experiences and the funding we can raise.

The communities we serve have financial barriers to participate in the arts. Jay and Blackford counties per capita income, in 2021 dollars, was \$7,000–\$11,000 lower than the average per capita income for the State of Indiana according to US Census figures. In Blackford and Jay Counties, 58% and 54% of families respectively receive free and reduced lunches. The communities we serve simply do not have the disposable income to pay full price for arts activities.

Approximately 85% of Arts Place income comes from fundraising including contributions, grants, endowments, private donations, sponsorships, and investments. This speaks to the generosity of people in the communities we serve and the confidence they have in the work we do. This support is the key reason why Arts Place can make the arts affordable, and whenever possible free, to the communities we serve.

For those who qualify, additional financial assistance, scholarships and opportunities to volunteer are offered. This longstanding practice assures that everyone who wants to participate can.

OUR *finances*

A financial review assures the trust and reliability of our organization's financial information, enhances transparency and accountability for our stakeholders, ensures regulatory compliance, prevents errors and fraud, improves operational efficiency, and provides valuable insights for better decision-making. A financial review may identify weaknesses in internal controls, ultimately safeguarding a company's reputation and overall organizational value.

The activities of Arts Place are reviewed by independent certified accountants at Bollenbacher & Associates, LLC annually.

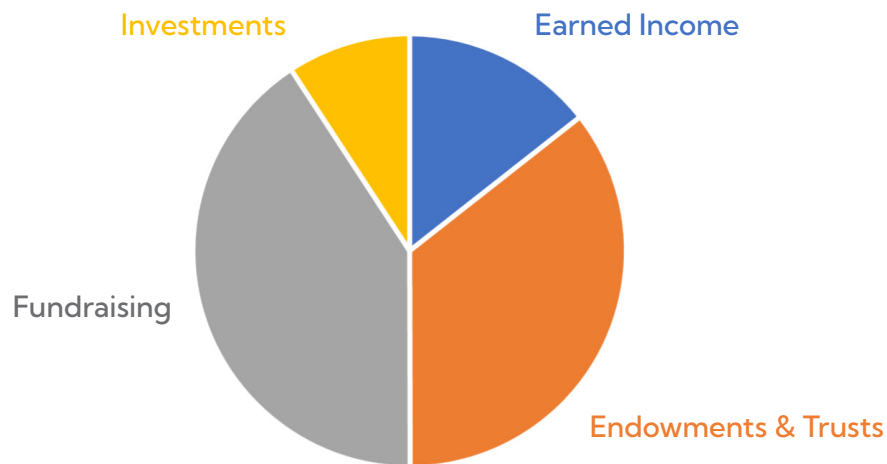
ASSETS, LIABILITIES, & EQUITY

ASSETS		FY25
	Total Current Assets	\$851,560.32
	Total Fixed Assets	\$2,666,961.76
	Total Other Assets	\$580,155.84
TOTAL ASSETS		\$4,098,677.92

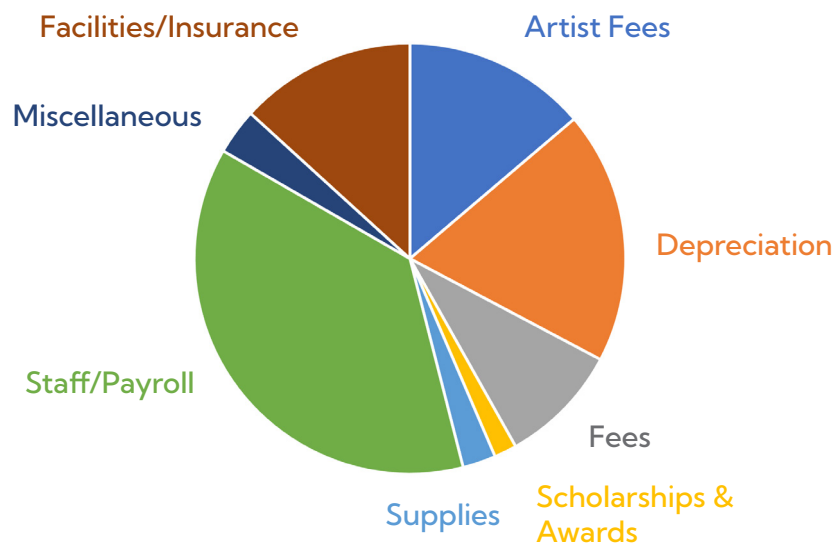
LIABILITIES & EQUITY		
	Total Current Liabilities	\$23,724.57
	Total Long Term Liabilities	\$80,350.11
	Total Equity	\$3,994,603.24
TOTAL LIABILITIES & EQUITY		\$4,098,677.92

INCOME & EXPENSES

FY25 INCOME \$617,551.76



FY25 EXPENSES \$629,674.64



REGIONAL ARTS & CULTURE *plans*

These regional arts plans for Blackford and Jay Counties (Indiana) and Auglaize County (Ohio) were funded by the National Endowment for the Arts through their “Our Town” grant and fiscally managed by Arts Place, Inc.

Our Town projects seek to “provide opportunities for the arts to be integrated into the fabric of community life — Strengthening Communities.” A consultant team facilitated a community-driven planning process for each county providing opportunity to coordinate strategic efforts beyond individual boundaries.



SCAN QR CODE TO SEE MORE DETAILS BY REGION



AUGLAIZE COUNTY
OHIO



BLACKFORD
COUNTY INDIANA



JAY COUNTY
INDIANA

“ ARTS AND CULTURE ARE ESSENTIAL FOR BUILDING COMMUNITY, SUPPORTING DEVELOPMENT, NURTURING HEALTH AND WELL-BEING, AND CONTRIBUTING TO ECONOMIC OPPORTUNITY. ”

– *arts, culture, and community development*

MISSION AND VALUES STATEMENTS

Our mission is to nurture the creative spirit in the communities we serve.

At Arts Place, our values are **GIFTED** to the communities we serve, being mindful of:

GOLDEN RULE

To the best of our abilities, those acting on behalf of Arts Place will strive to do unto others as we would have them do unto us.

INCLUSION

Arts Place will strive to be accessible to all people of all ages. We will provide programming specifically designed for children, individuals 60 and over, and for those in between. To the best of our ability to fund such an approach, we will maintain a bias toward attendance and participation, rather than revenue. We will focus on reach and outreach.

Arts Place, Inc. shall not discriminate against any person with regard to the participant's race, color, religion, age, sex, disability, national origin, ancestry, or status as a veteran.

FREEDOM OF EXPRESSION

Freedom of expression is the keystone of the American ideal. It is an end in itself and deserves society's greatest protection. The right to express one's thoughts and communicate freely affirms the dignity and worth of each of us. Arts Place defends the right of artists to perform and produce works of art free of government and private

censorship. Arts Place, Inc. neither supports nor rejects the viewpoints expressed in works of art it presents with respect to exhibits, public performances, and arts publications. The views expressed are those of the artists presented. While we will not present art that constitutes pornography, Arts Place shall not otherwise censor the specific viewpoint of artists or their presentation of ideas. Freedom of expression is not just about freedom for speakers, writers, and performers. It also means the freedom of audiences to listen, read, or attend whatever they please.

TRANSFORMATIVE POWER OF ART

The arts provide an avenue to a richer and more meaningful life. Arts Place was founded in the belief that the residents of every community, whether large or small, deserve access to the arts as a part of their daily lives.

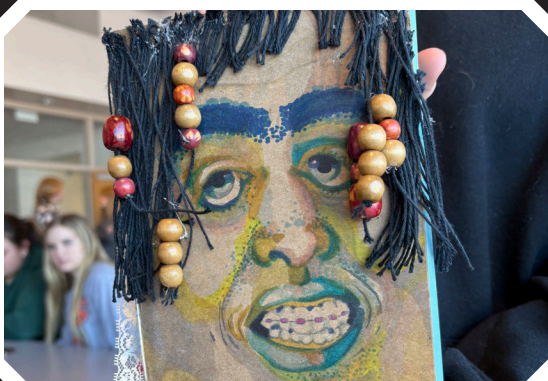
EQUITABLE DISTRIBUTION

Equitable access to the arts ensures that all individuals have access to arts programming while recognizing that some may have barriers to participation while others may not. Arts Place strives to lessen or remove barriers to participation for those in need so that anyone who wishes to participate can.



Fleetwood Macked

Hudson Family Park Summer Concert Series



ARTS PLACE

JAY COUNTY CAMPUS

131 East Walnut Street
Portland, IN 47371
260-726-4809

BLACKFORD COUNTY ARTS CENTER

107 West Washington Street
Hartford City, IN 47348
765-348-4154

myartsplace.org